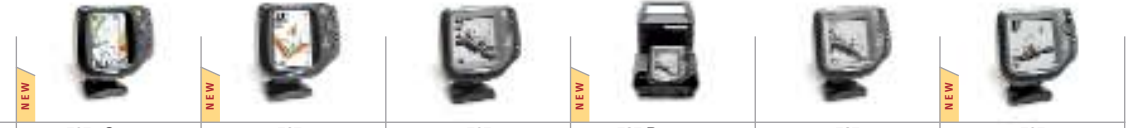


### 500 Series



Model	595c Combo	585c	565	535 PORTABLE	535	525
Display Size	5" Diagonal	5" Diagonal	5" Diagonal	5" Diagonal	5" Diagonal	5" Diagonal
Display Pixel Matrix	320V x 240H	320V x 240H	640V x 320H	320V x 320H	320V x 320H	240V x 240H
Display Type	Color TFT	Color TFT	FSTN LCD	FSTN LCD	FSTN LCD	FSTN LCD
Display Colors/Grayscale	256 Colors	256 Colors	12 Level Grayscale	12 Level Grayscale	12 Level Grayscale	12 Level Grayscale
Sonar	Single Beam	Single Beam	Dual Beam	Single Beam	Single Beam	Single Beam
Sonar Coverage	20° @-10db	20° @-10db	20° & 60° @-10db	20° @-10db	20° @-10db	20° @-10db
Sonar Frequency	200kHz	200kHz	200kHz & 83kHz	200kHz	200kHz	200kHz
Sonar Optional	n/a	n/a	n/a	n/a	n/a	n/a
Target Separation	2 1/2 Inches	2 1/2 Inches	2 1/2 Inches	2 1/2 Inches	2 1/2 Inches	2 1/2 Inches
Power Output	300 Watts (RMS)	300 Watts (RMS)	250 Watts (RMS)	250 Watts (RMS)	250 Watts (RMS)	200 Watts (RMS)
	2400 Watts (Peak-to-Peak)	2400 Watts (Peak-to-Peak)	2000 Watts (Peak-to-Peak)	2000 Watts (Peak-to-Peak)	2000 Watts (Peak-to-Peak)	1600 Watts (Peak-to-Peak)
Depth Capability	1000 Feet	1000 Feet	800 Feet	800 Feet	800 Feet	800 Feet
Temperature	Included	Included	Included	Included	Included	Included
Speed	Included	Capable	Capable	Capable	Capable	Capable
Backlight	Yes	Yes	Yes	Yes	Yes	Yes
Waterproof	Yes	Yes	Yes	Yes	Yes	Yes
Unit Case Size	7" H x 7 1/4" W x 4" D	7" H x 7 1/4" W x 4" D	7" H x 7 1/4" W x 4" D	n/a	7" H x 7 1/4" W x 4" D	7" H x 7 1/4" W x 4" D
Mount	Quick Disconnect	Quick Disconnect	Quick Disconnect	Portable	Quick Disconnect	Quick Disconnect
Transducer Standard	XHS-9-20-T	XHS-9-20-T	XHS-9-20-T	XPT-9-20-T	XHS-9-20-T	XHS-9-20-T
Transducer Mounting	Inside Hull or Transom	Inside Hull or Transom	Inside Hull or Transom	Suction Cup	Inside Hull or Transom	Inside Hull or Transom
Power Input	10-20 VDC	10-20 VDC	10-20 VDC	10-20 VDC	10-20 VDC	10-20 VDC

#### GPS Features

GPS Receiver	●	—	—	—	—	—
GPS Trackplotting	●	—	—	—	—	—
GPS Chartplotting	●	—	—	—	—	—
Waypoints, Routes, Tracks/Points	700, 20, 10/2,000	—	—	—	—	—
Humminbird UniMap Built-in	●	—	—	—	—	—
Navionics Gold Chart Compatible	●	—	—	—	—	—
Navionics HotMaps Compatible	●	—	—	—	—	—
Navionics HotMaps Premium Chart Compatible	●	—	—	—	—	—
Trolling Grids & Waypoint Targets	●	—	—	—	—	—
NMEA Output (0183)	●	—	—	—	—	—

#### Optional Add-Ons

GPS Ready	●	—	—	—	—	—
WeatherSense Compatible	—	—	—	—	—	—
Wireless Sonar Link Compatible	—	—	—	—	—	—
HumminbirdPC Compatible	—	—	—	—	—	—
Upgradeable Internal Software	—	—	—	—	—	—

#### User Features:

Split Screen Zoom	●	●	●	●	●	●
Split Screen Bottom Lock	—	—	—	—	—	—
3D Chart View	●	—	—	—	—	—
Large Digits View	●	●	●	●	●	●
Wide/Narrow Cone Split Screen	—	—	—	—	—	—
Custom View Selections	●	●	●	●	●	●
Custom Digital Readout Selection	●	●	●	●	●	●
View Preset Keys	—	—	—	—	—	—
Temperature Graph	—	—	—	—	—	—
Temperature Alarm	—	—	—	—	—	—
TruArch Technology	—	—	—	—	—	—
Freeze Frame	●	—	—	—	—	—
Instant Image Update	—	—	—	—	—	—
Mark Structure on Sonar	●	—	—	—	—	—
Selective Fish ID+	●	●	●	●	●	●
Real Time Sonar	●	●	●	●	●	●
Sonar Echo Enhancement	●	●	●	●	●	●
Triplog	●	○	○	○	○	○
X-Press Menu System	●	●	●	●	●	●

● Included ○ Optional

Features and specifications subject to change without notice